



**Comhairle Contae
Dhún na nGall**
Donegal County Council

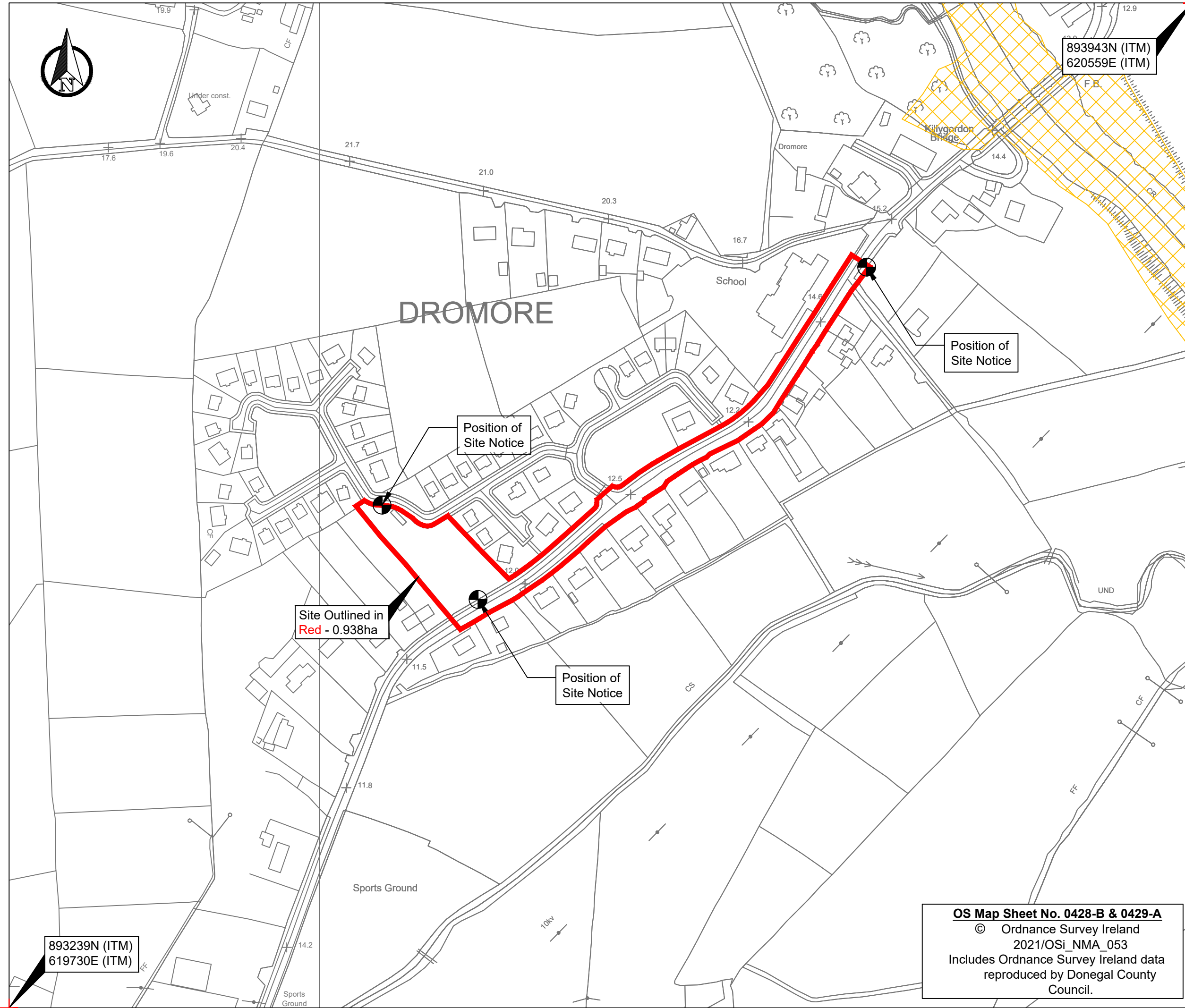
**PART 8 APPLICATION
AT DROMORE, KILLYGORDON,
CO. DONEGAL**

DROMORE PARK PUMP STATION UPGRADE

PUBLIC CONSULTATION DRAWINGS


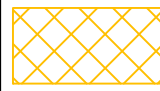

DRAWINGS TO-023-PL-101 - TO-023-PL105

24TH JUNE 2021 - 22ND JULY 2021



- Notes:**
1. This drawing is for planning purposes only.
 2. All dimensions in meters unless otherwise stated.
 3. Do not scale off drawings.
 4. Service layouts are indicative only.

Legend:

-  Site Boundary Area = 0.938ha
-  River Finn SAC
-  Position of Site Notice

Revisions		
Rev:	Date:	Details:

PART 8 SUBMISSION	
Project:	Dromore Park Pump Station Upgrade at Dromore, Killygordon, Co. Donegal
Dwg Title:	Site Location Map
Dwg No:	TO-023-PL-101
OSI Map Title:	0428-B; 0429-A
Date:	June 2021
Drawn By:	ST
Checked By:	ML
Approved By:	PM
Scale:	1:2500 @ A3
Job No:	TO-023

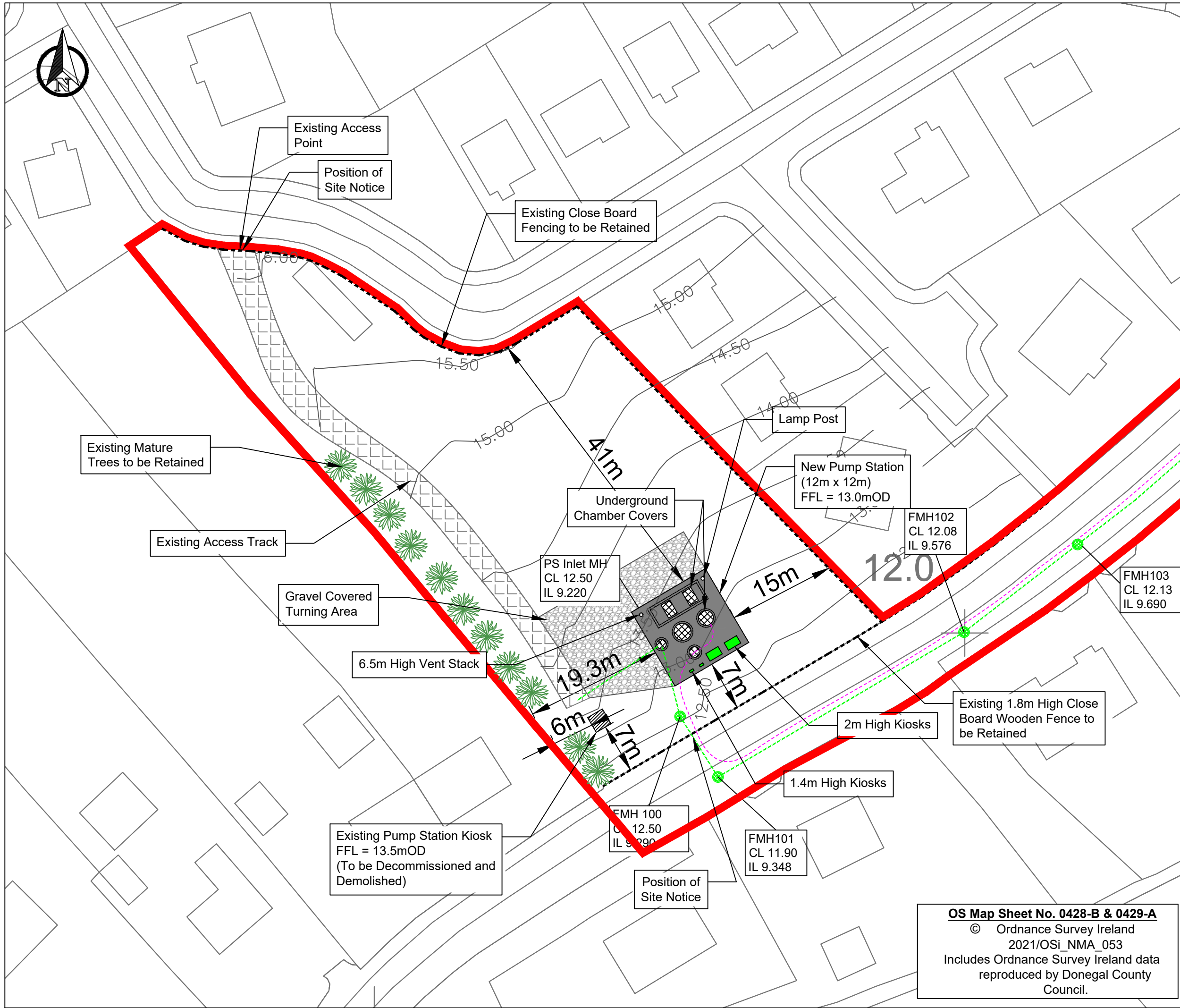
OS Map Sheet No. 0428-B & 0429-A
 © Ordnance Survey Ireland
 2021/OSi_NMA_053
 Includes Ordnance Survey Ireland data reproduced by Donegal County Council.

Comhairle Chontae Dhún na nGall
 Donegal County Council
 Community Development and Planning Services
 Tel:(074)9153900 Fax:(074)9172812
 www.donegalcoco.ie




893239N (ITM)
 619730E (ITM)

893943N (ITM)
 620559E (ITM)



- Notes:**
1. This drawing is for planning purposes only.
 2. All dimensions in meters unless otherwise stated.
 3. Do not scale off drawings.
 4. Service layouts are indicative only.

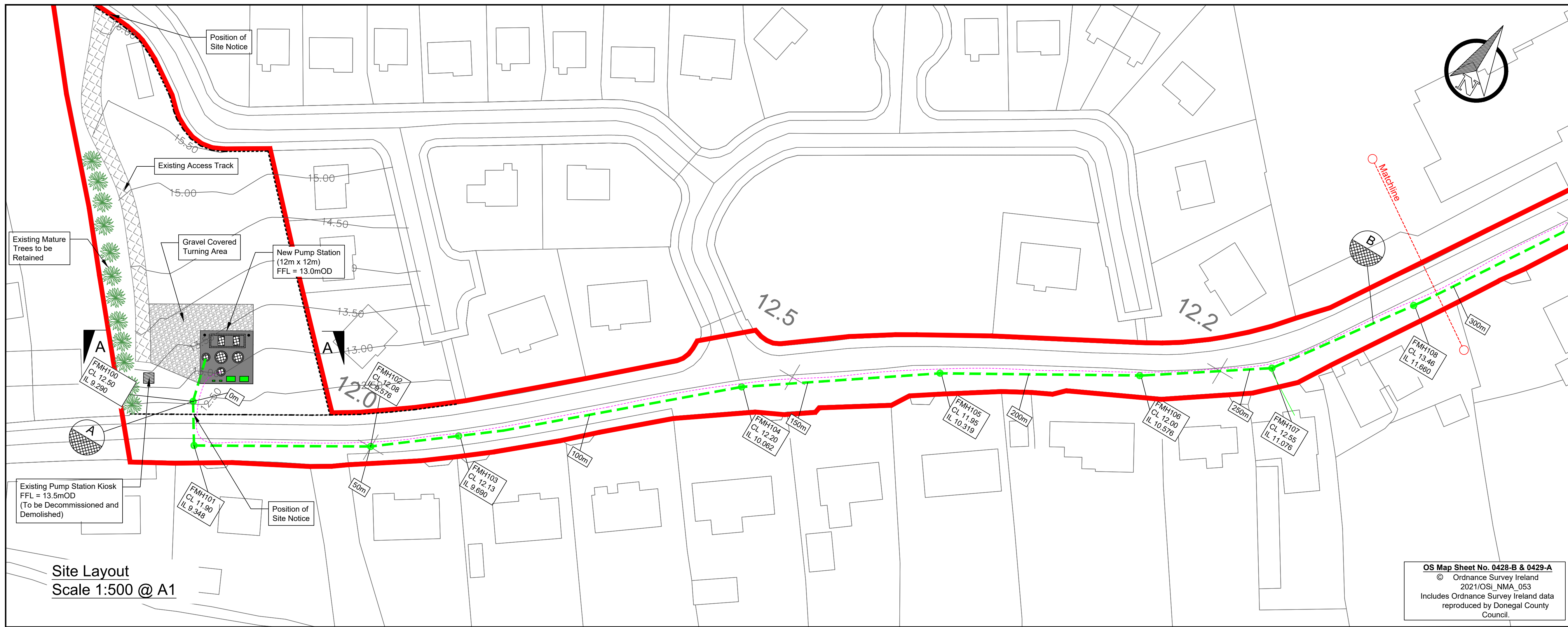
- Legend:**
- Site Boundary
 - Proposed 225mm Ø Gravity Sewer
 - Proposed Foul manhole (FMH)
 - Proposed 80mm Ø Rising Main
 - Existing Close Board Fencing

Note: A variation of + or - 0.5m to be allowed for in the shown finished floor levels to compensate for any unforeseen ground conditions etc.

Revisions		
Rev:	Date:	Details:
PART 8 SUBMISSION		
Project: Dromore Park Pump Station Upgrade at Dromore, Killygordon, Co. Donegal		
Dwg Title: Site Layout - Pump Station		
Dwg No: TO-023-PL-102	OSI Map Title: 0428-B; 0429-A	
Date: June 2021	Drawn By: ST	Checked By: ML
Scale: 1:500 @ A3	Approved By: PM	Job No: TO-023

OS Map Sheet No. 0428-B & 0429-A
 © Ordnance Survey Ireland
 2021/OSi_NMA_053
 Includes Ordnance Survey Ireland data
 reproduced by Donegal County
 Council.

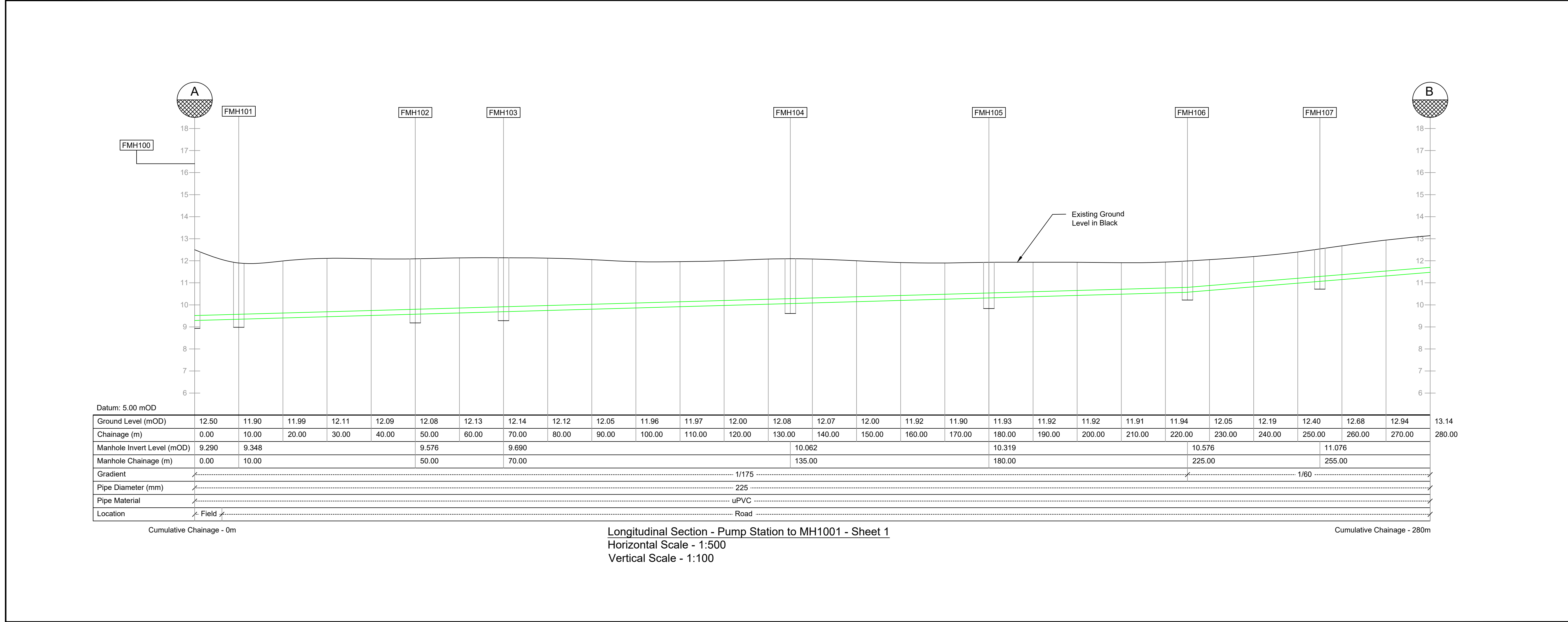
Comhairle Chontae Dhún na nGall
Donegal County Council
 Community Development and Planning Services
 Tel:(074)9153900 Fax:(074)9172812
 www.donegalcoco.ie



- Notes:**
1. This drawing is for planning purposes only.
 2. All dimensions in meters unless otherwise stated.
 3. Do not scale off drawings.
 4. Service layouts are indicative only.

- Legend:**
- Site Boundary
 - Proposed 225mm Ø Gravity Sewer
 - Proposed Foul Manhole (FMH)
 - Proposed 80mm Ø Rising Main
 - Pipeline Chainage
 - Existing Close Board Fencing

Note: A variation of + or - 0.5m to be allowed for in the shown finished floor levels to compensate for any unforeseen ground conditions etc.



Revisions

Rev.	Date:	Details:

PART 8 SUBMISSION

Project: Dromore Park Pump Station Upgrade at Dromore, Killygordon, Co. Donegal

Dwg Title: Site Layout - Sheet 1 of 2

Dwg No: TO-023-PL-103 OSI Map Title: 0429-A

Date: June 2021 Drawn By: ST
Checked By: ML
Approved By: PM

Scale: 1:500 & 1:250 @ A1 Job No: TO-023

Comhairle Chontae Dhún na nGall
Donegal County Council
Community Development and Planning Services
Tel:(074)9153900 Fax:(074)9172812
www.donegalcoco.ie

OS Map Sheet No. 0428-B & 0429-A

© Ordnance Survey Ireland
2021/OSi_NMA_053
Includes Ordnance Survey Ireland data
reproduced by Donegal County
Council.

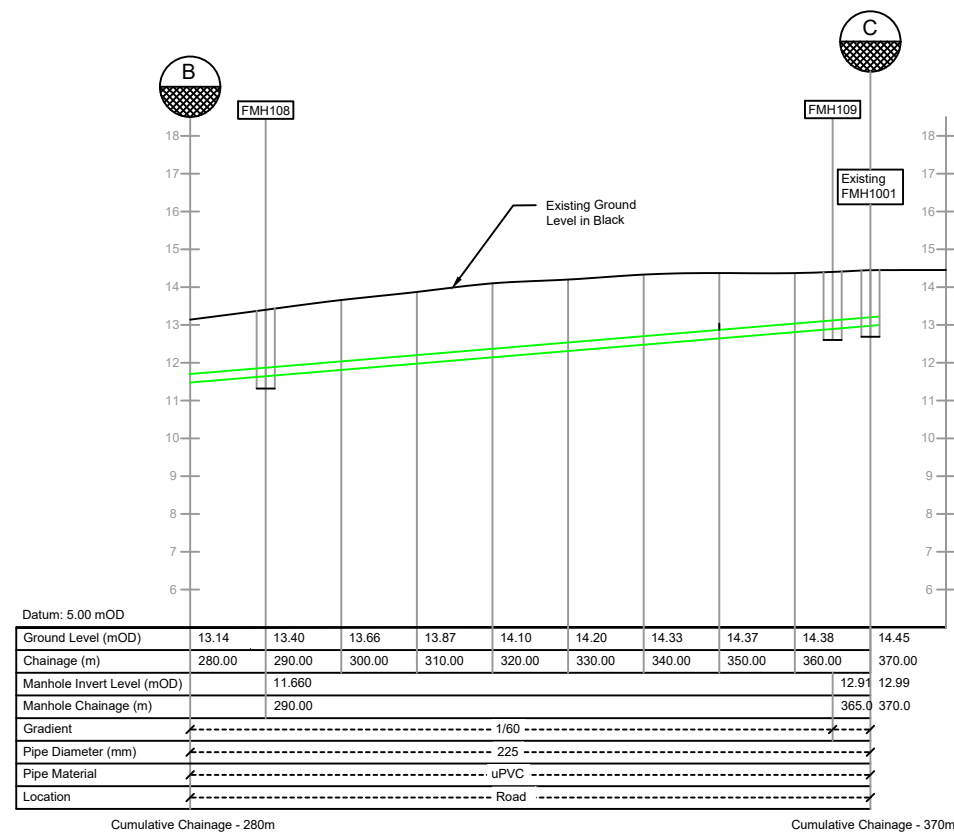
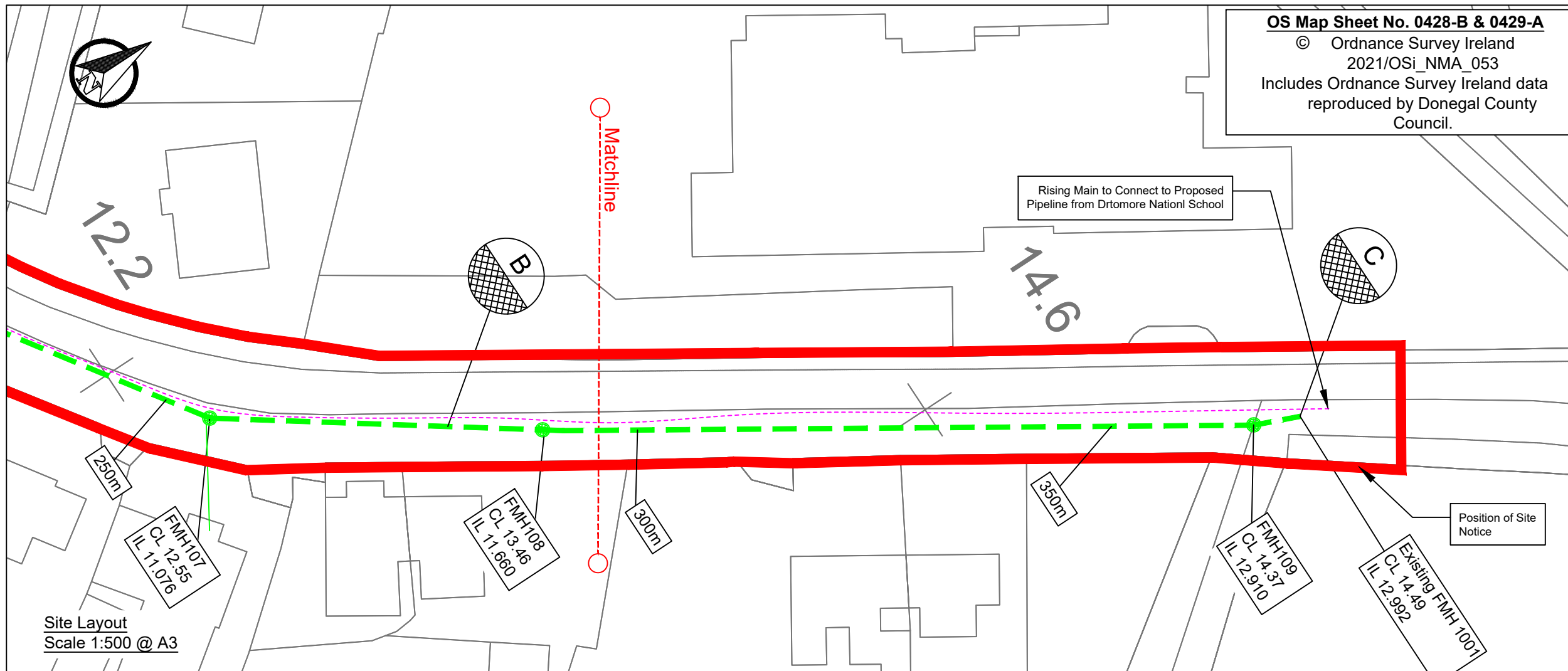
Notes:

1. This drawing is for planning purposes only.
2. All dimensions in meters unless otherwise stated.
3. Do not scale off drawings.
4. Service layouts are indicative only.

Legend:

- Site Boundary
- Proposed 225mm Ø Gravity Sewer
- Proposed Foul manhole (FMH)
- Proposed 80mm Ø Rising Main
- 100m Pipeline Chainage

Note: A variation of + or - 0.5m to be allowed for in the shown finished floor levels to compensate for any unforeseen ground conditions etc.



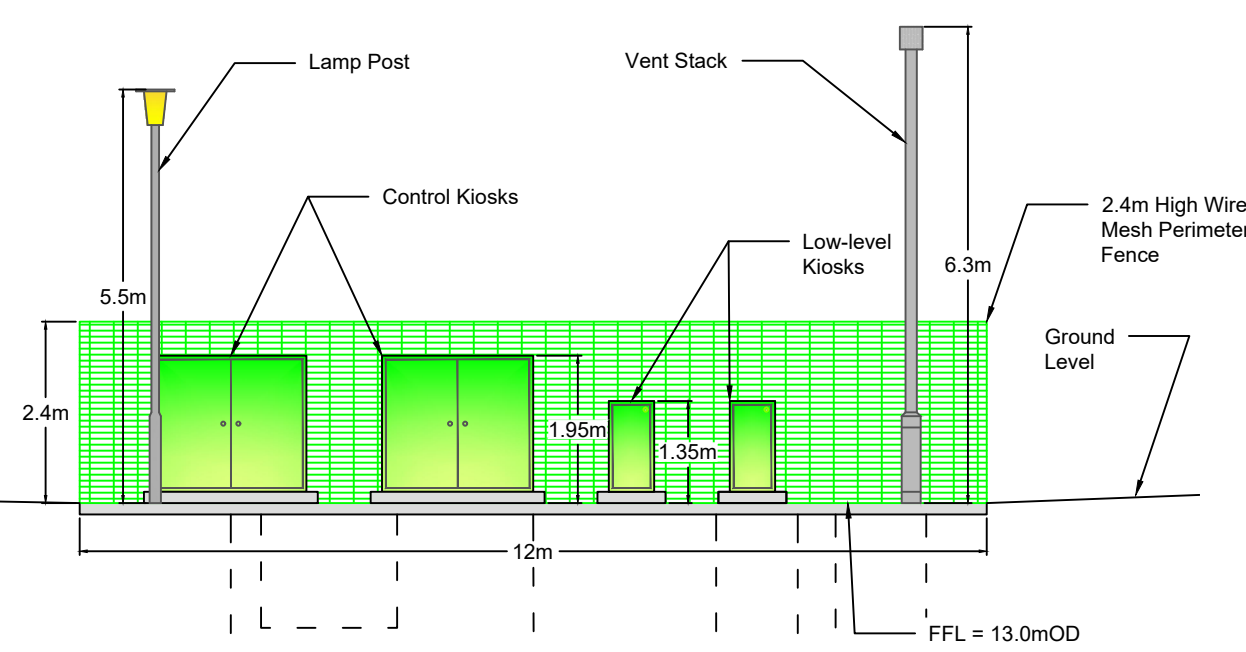
Longitudinal Section - Pump Station to MH1001 - Sheet 2
Horizontal Scale - 1:1000
Vertical Scale - 1:200

Revisions		
Rev:	Date:	Details:

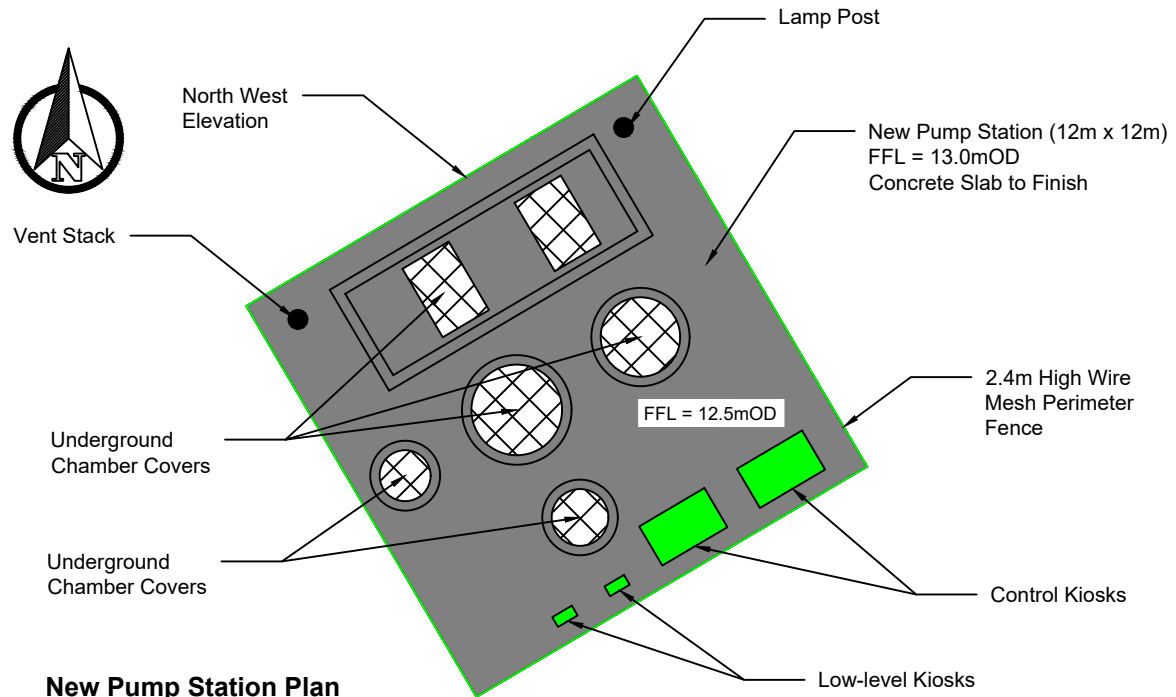
PART 8 SUBMISSION	
Project:	Dromore Park Pump Station Upgrade at Dromore, Killygordon, Co. Donegal
Dwg Title:	Site Layout - Sheet 2 of 2
Dwg No:	TO-023-PL-104
OSI Map Title:	0428-B; 0429-A
Date:	June 2021
Drawn By:	ST
Checked By:	ML
Approved By:	PM
Scale:	As Shown @ A3
Job No:	TO-023

Comhairle Chontae Dhún na nGall

Donegal County Council
Community Development and Planning Services
Tel:(074)9153900 Fax:(074)9172812
www.donegalcoco.ie



North West Elevation
(Fence to Front Removed for Clarity)
Scale - 1:100



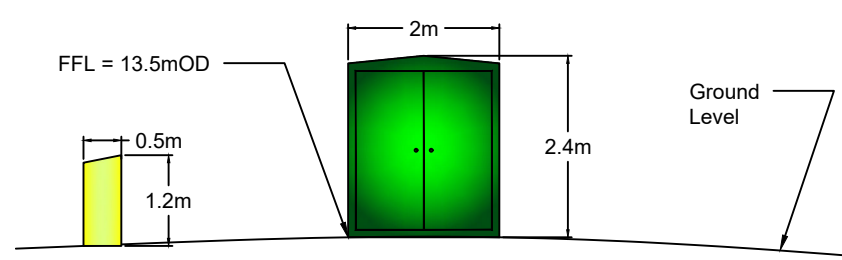
New Pump Station Plan
Scale - 1:200



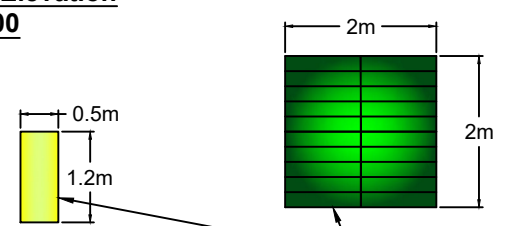
Existing Pump Station to be Decommissioned and Demolished



Existing ESB Kiosk to be Decommissioned and Demolished

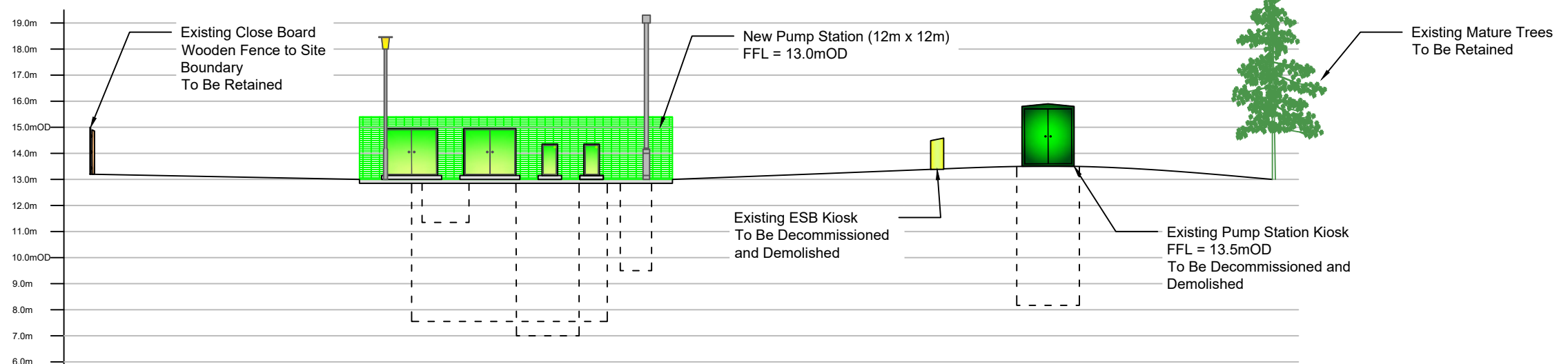


Existing Pump Station and ESB Kiosk Elevation
Scale - 1:100



Existing Pump Station and ESB Kiosk Plan
Scale - 1:100

Existing Pump Station and ESB Kiosk to be Decommissioned and Demolished
FFL = 13.5mOD



Site Section A-A
Scale - 1:200

- Notes:**
1. This drawing is for planning purposes only.
 2. All dimensions in meters unless otherwise stated.
 3. Do not scale off drawings.
 4. Service layouts are indicative only.

Note: A variation of + or - 0.5m to be allowed for in the shown finished floor levels to compensate for any unforeseen ground conditions etc.

Revisions		
Rev:	Date:	Details:

PART 8 SUBMISSION	
Project: Dromore Park Pump Station Upgrade at Dromore, Killygordon, Co. Donegal	
Dwg Title: Pump Station Plan, Section and Elevations	
Dwg No: TO-023-PL-105	OSI Map Title: 0428-B; 0429-A
Date: May 2021	Drawn By: ST Checked By: ML Approved By: PM
Scale: As Shown @ A3	Job No: TO-023